



INTRODUCTION TO NQAAP

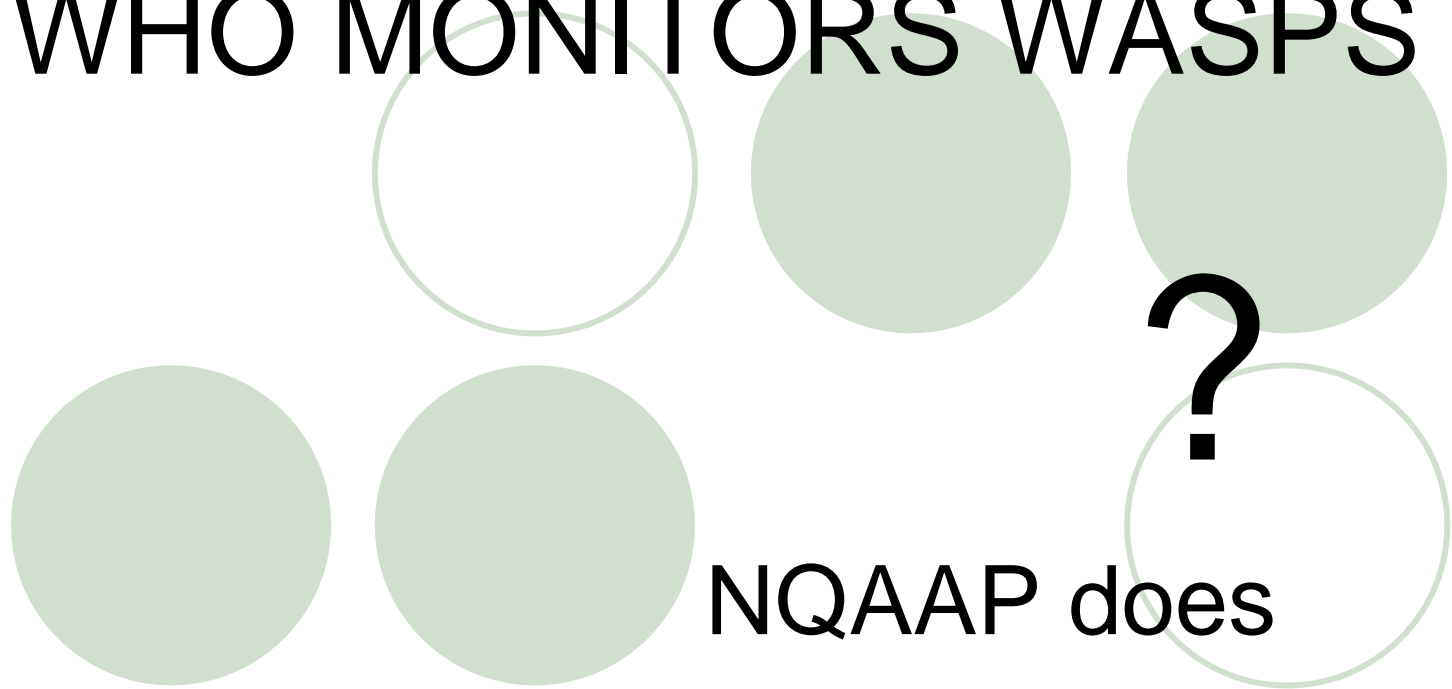
WASP'S USER GROUP
MEETING 2006



WASPS

- Independent external QA scheme
 - Red cell antibody detection
- CPA inspected
- Assists laboratories
 - Monitoring
 - Improving performance
- Provides reports to users of overall performance

WHO MONITORS WASPS



NQAAP does

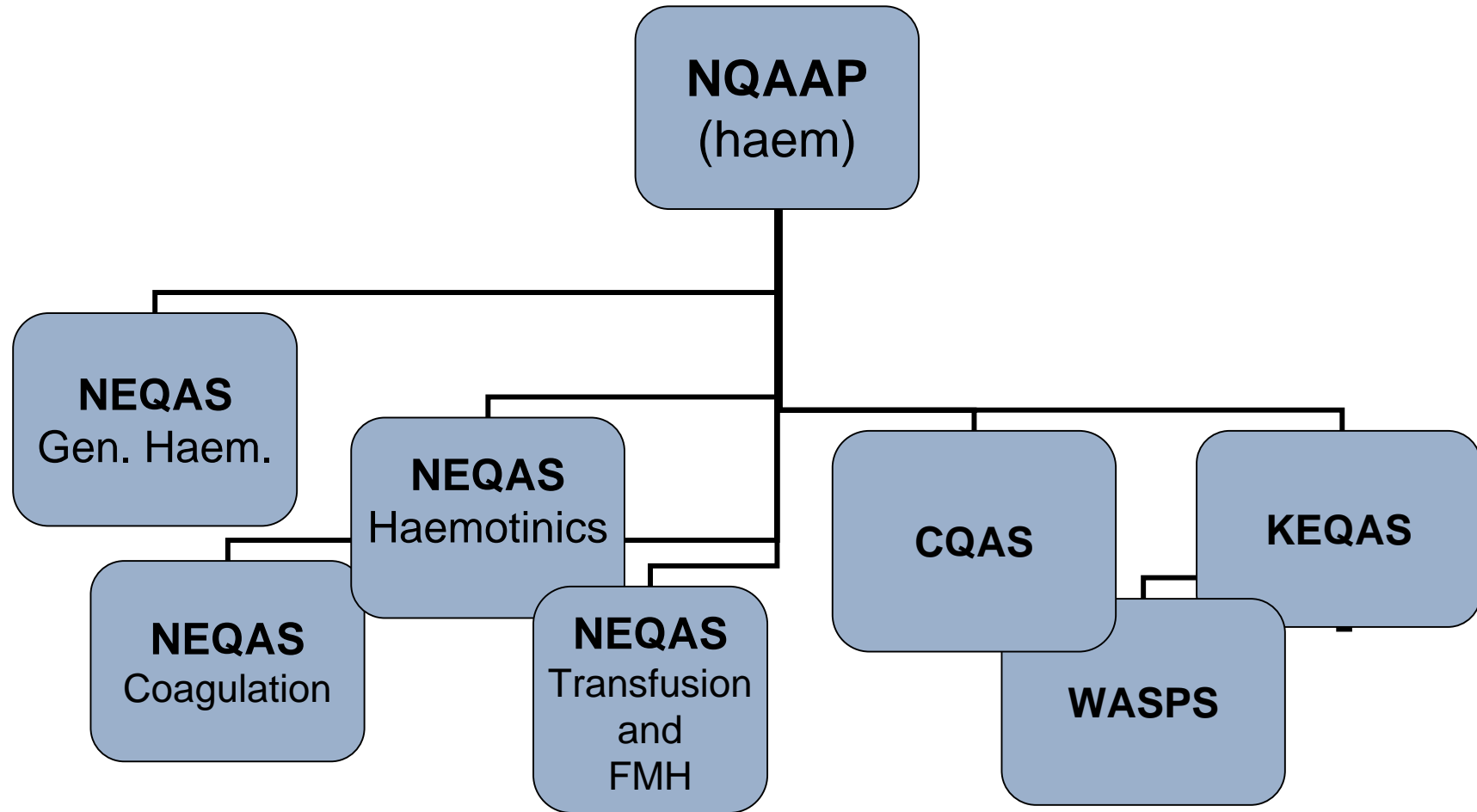


NQAAP

National Quality Assurance Advisory Panel
(Haematology)

- Royal College of Pathologists
- Institute of Biomedical Scientists
- Association of Clinical Pathologists
- British Blood Transfusion Society
- British Society of Haematology

INTRODUCTION TO NQAAP





INTRODUCTION TO NQAAP

- Meets twice a year
 - Reviews annual report from each scheme with Chairman of Organising committee
 - Highlight and discusses problems
 - Ensures scheme is “fit for purpose”
 - Acts on information regarding persistent poor performers (PUPs)



INTRODUCTION TO NQAAP

Joint Working Group

- NQAAP Haematology
- NQAAP Chemical Pathology
- NQAAP Microbiology
- NQAAP Cyto- & Molecular Genetics
- NQAAP Immunology
- NQAAP Histopathology



SUMMARY

- Monitoring of laboratory performance in UK
 - Internal QA
 - External QA schemes (NEQAS, WASPS)
 - Report to steering committees
 - NQAAP
 - Joint Working Group
 - Department of Health