

KIWI QA

NEW ZEALAND BLOOD
SERVICE



NORTH ISLAND

AUCKLAND

WELLINGTON

SOUTH ISLAND

CHRISTCHURCH

DUNEDIN

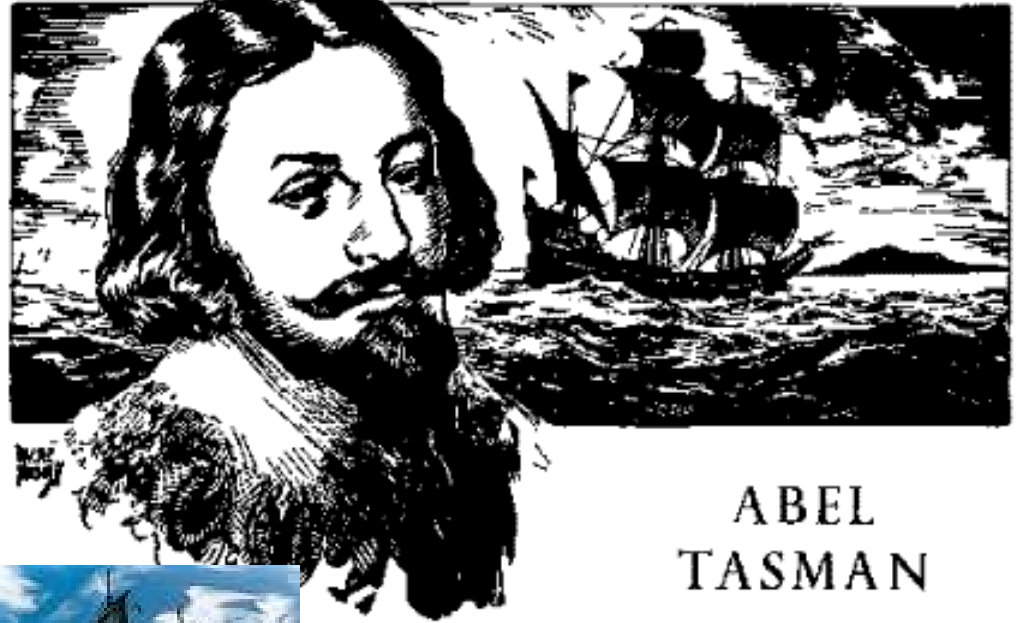
STEWART ISLAND

FOUNDING HISTORY

1200 Maori



1642



ABEL
TASMAN



1769 Captain Cook



COLONISING HISTORY

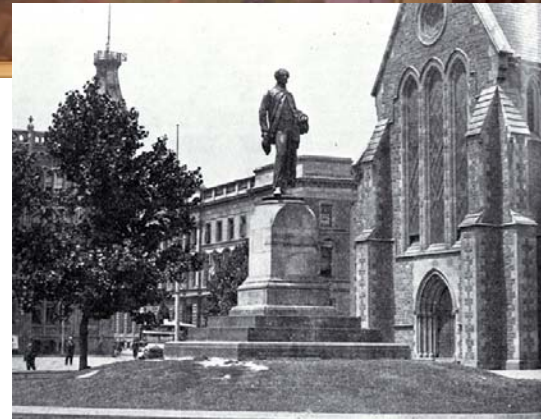
1814 Missionaries



1840 Treaty of Waitangi



1861 Gold discovered



1850 Canterbury

ECONOMICS



New Zealand Blood Service

NZBS

- Founded in 1998
- Replaced competing separate blood collection units (mainly hospital based)
- Government Agency
- HQ in Auckland

STRUCTURE

- Donor Administration & collection
 - 6 sites (4 North, 2 South)
- Processing
 - 4 sites (3 North, 1 South)
- Testing (grouping, screening, inf.markers)
 - 2 sites (1 North Island, 1 South Island)
- Blood Banking (Transfusion labs)
 - NZBS operates 7
 - Hospital Boards operate 28

HAEMOVIGILANCE

- Established 2005
- Based on SHOT
- Transfusion Safety Officer every Blood Bank
- Transfusion Nurse in each Centre

SIMILAR PRACTICE

- Blood, platelet, FFP collections
- Universal leucodepletion since 2001
- Apheresis
 - Platelets
 - Plasma
 - FFP
 - therapeutic

DIFFERENT PRACTICE

- No HTLV testing
- No donations accepted from residents of UK, Eire or France
- Own plasma fractionated
 - In Australia, but kept separate.

POPULATION

- Europeans 79%
- Maori 16%
- Other 5%
 - Polynesian, Asian, Oriental.

BLOOD GROUP DISTRIBUTION

	UK	NZ
O	47%	47%
A	42%	38%
B	8%	11%
AB	3%	4%
Rh Neg	16%	18%

BLOOD GROUP ANOMALIES

- Jk (a- b-)
 - 0.27% Polynesians, 0.5% Cook Islanders
- Anti Jk3
 - IgG
 - Immediate and delayed Tx reactions
 - Cord +ve DAT

COOK ISLANDS



I GROUP VARIANT

- I^T – “transition”
 - Strong cord cells, weak adult I cells and weaker adult i cells
- Anti I^T present in 15% of Melanesians
- Associated with South East Asian ovalocytosis
 - Band 3 gene heterozygotes
 - Resistance to malaria

QA SCHEMES

- Royal College Pathologists of Australia
 - www.rcpaqap.com.au/transfusion/
- A scheme
 - Grouping, DAT, phenotyping, antibody screen and identification, Xmatching
- B scheme
 - Group and screen
- F scheme
 - FMH estimation

RCPA SCHEME

- 6 surveys per year (4 for F scheme)
- Penalty scores
 - 0–150 within acceptable limits
 - 100 major error
 - 25 minor technical or clerical error
 - 25 not returned by due date
- Web based entry
- Educational exercises
- Customer surveys

RCPA Distribution

- A scheme 360 participants
- B scheme 90 participants
- F scheme 125 participants
- Australia, NZ, Hong Kong, Singapore, Malaysia, Taiwan, Saudi Arabia
 - 4 days longest average time for delivery
 - Sample at 38C for 8 hours, then 30C for 4days then fridge until closing date.

National Immunohaematology QA Programme (NIQAP)

- NZBS Reference Laboratory, Auckland.
- 3 exercises per year
 - ABO Rh grouping
 - antibody screening and identification
 - Xmatching
 - antigen typing
 - DAT
 - Additional tests
 - Educational exercises

NIQAP

- 250 participants
- Annual review by steering committee
- Participants survey
- Annual report

ANZ QA

- Similar to NEQAS and WASPS
- Surveys always include clinical scenario
- Patient name and Number always included
- More emphasis on questionnaires/educational surveys

SUMMARY

- New Zealand fantastic place to visit
- NZBS interesting
 - Similar to UK
 - More hospital input
- Oz/NZ QA based on UK schemes
 - More emphasis on clinical scenarios and clerical errors

THANK YOU

ANY QUESTIONS ?